



Accurate Measurements/ Fast and Simple Operation

# Polariscope

Fullauto StrainEye

**LSM-9002**

product family

Measures residual stresses by observing strain in glass or plastics.

Manufactured with high-quality optical filters.

Supporting customer measurements with more sophisticated software.



**LSM-9002LE**  
[Standard]

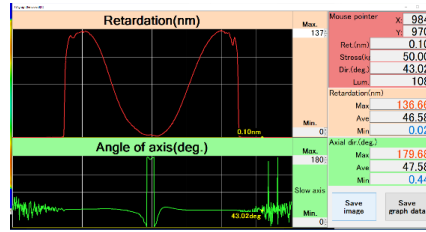
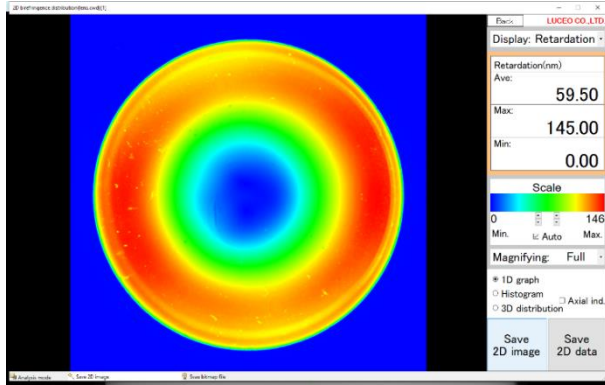


**LSM-9002S**  
[Equipped with a 6X zoom lens]

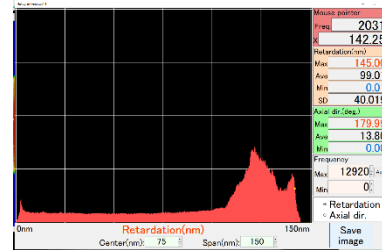
# New Software

Equipped with new user-friendly software compatible with Windows11.(improvement of product life cycle)

## Measurement Case Optical lens



1D Graph above shows retardation data along the line you set.

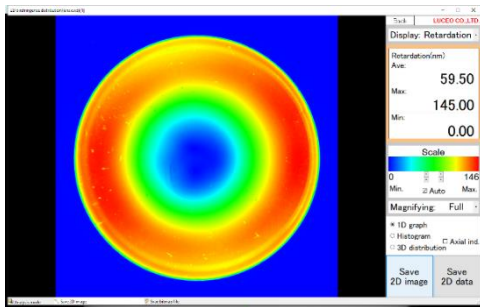


Graph above shows a histogram with the area you set in left result.

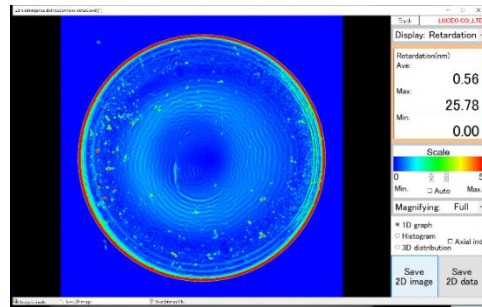
# New Analysis Mode

Added defect detection mode, which is possible to be confirmed scratches, dents and foreign objects because local changes can be extracted and local distortion

## 【Standard Mode (Retardation)】

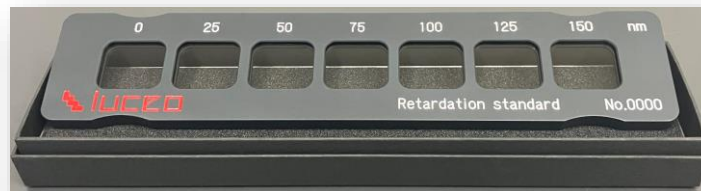


## New 【Defect Detection Mode】



# Retardation standard

It can be used to calibrate polariscope. It is also possible to combine the desired phase difference by special order. Please contact us for details.



## Specifications

	LSM-9002LE	LSM-9002S
Model name	LSM-9002LE	LSM-9002S
Size(body)	W300×D353×H540 mm	W300×D353×H580 mm
Sample placement space(height)	0~160 mm	0~115 mm
Measurement area size	205×205mm	MAX : 60×60mm MIN : 10×10mm
Measurement range	Re : 0~130nm	
Repeat accuracy	$\sigma = 1\text{nm}$	
Effective pixels	1100×1100	